



**New in 2014-parental questionnaire:**

## **POVERTY / FAMILY BUDGET**

- **Scaling the new items**
- **Relation to SES**
- **Relation to Children at risk ('zorgbreedte')**
- **Relation to Personality**
- **Determinant of CITO scores ?**
- **Consequences for measuring 'school effectiveness'**
- **Family budget versus segregation**
- **New itemlist for pupils' questionnaire?**

paul jungbluth, june 2015



## Regression based on general component, than autorecode into quintiles

Component Matrix<sup>a</sup>

	Component 1
wij gaan als gezin ieder jaar meerdere keren op vakantie	,711
als mijn kind bij een (sport)club wil, dan is dat zonder meer mogelijk	,756
mijn kind geeft elk jaar een verjaardagsfeestje	,664
we hebben genoeg geld om leuke dingen te doen met het gezin	,855

Report

		wij gaan als gezin ieder jaar meerdere keren op vakantie	als mijn kind bij een (sport) club wil, dan is dat zonder meer mogelijk	mijn kind geeft elk jaar een verjaardagsfeestje	we hebben genoeg geld om leuke dingen te doen met het gezin
financegezin 5x20% (alleen 2014)					
--	Mean	1,74	3,28	3,31	2,60
	N	616	616	616	616
	Std. Deviation	,962	1,086	1,278	,992
-	Mean	2,59	4,05	3,97	3,78
	N	618	618	618	618
	Std. Deviation	1,090	,584	,811	,587
0	Mean	3,41	4,24	4,29	4,06
	N	618	618	618	618
	Std. Deviation	1,084	,512	,583	,366
+	Mean	3,62	4,75	4,72	4,61
	N	621	621	621	621
	Std. Deviation	1,175	,446	,532	,523
++	Mean	4,70	5,00	5,00	5,00
	N	612	612	612	612
	Std. Deviation	,460	,000	,000	,000
Total	Mean	3,21	4,26	4,26	4,01
	N	3085	3085	3085	3085
	Std. Deviation	1,403	,867	,966	1,010

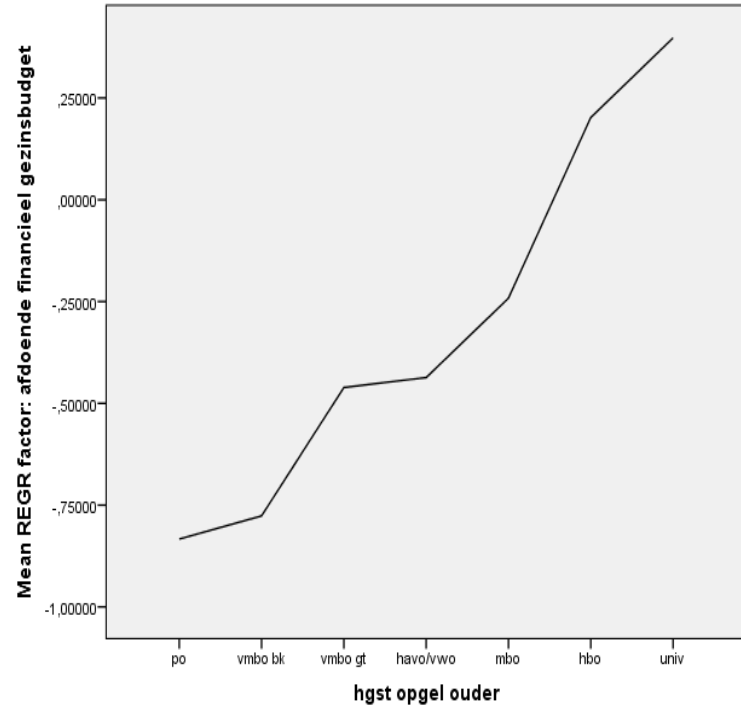
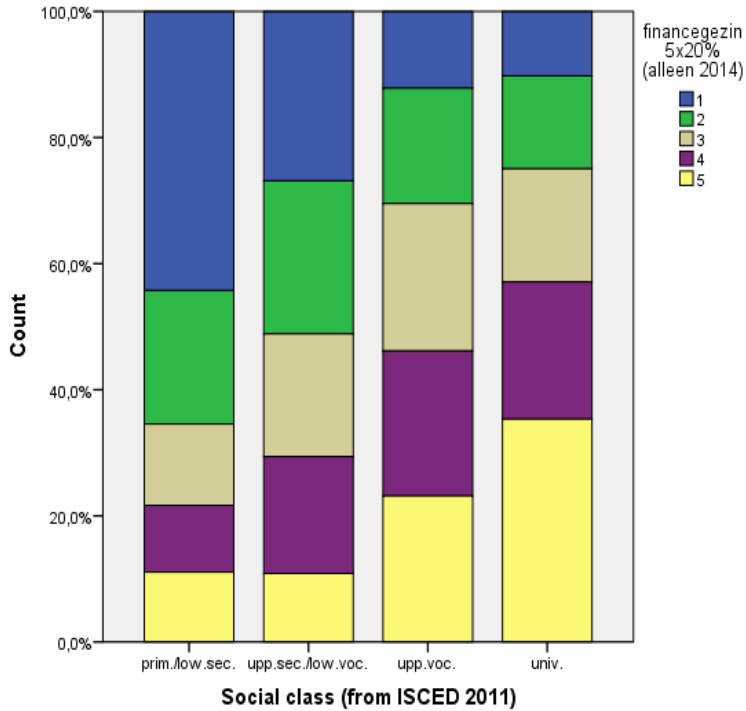


# Correlations

gezinsbudget

Social class (from ISCED 2011)  
Pearson Correlation ,308\*\*

hgst opgel ouder  
,306\*\*



p.jungbluth@maastrichtuniversity.nl

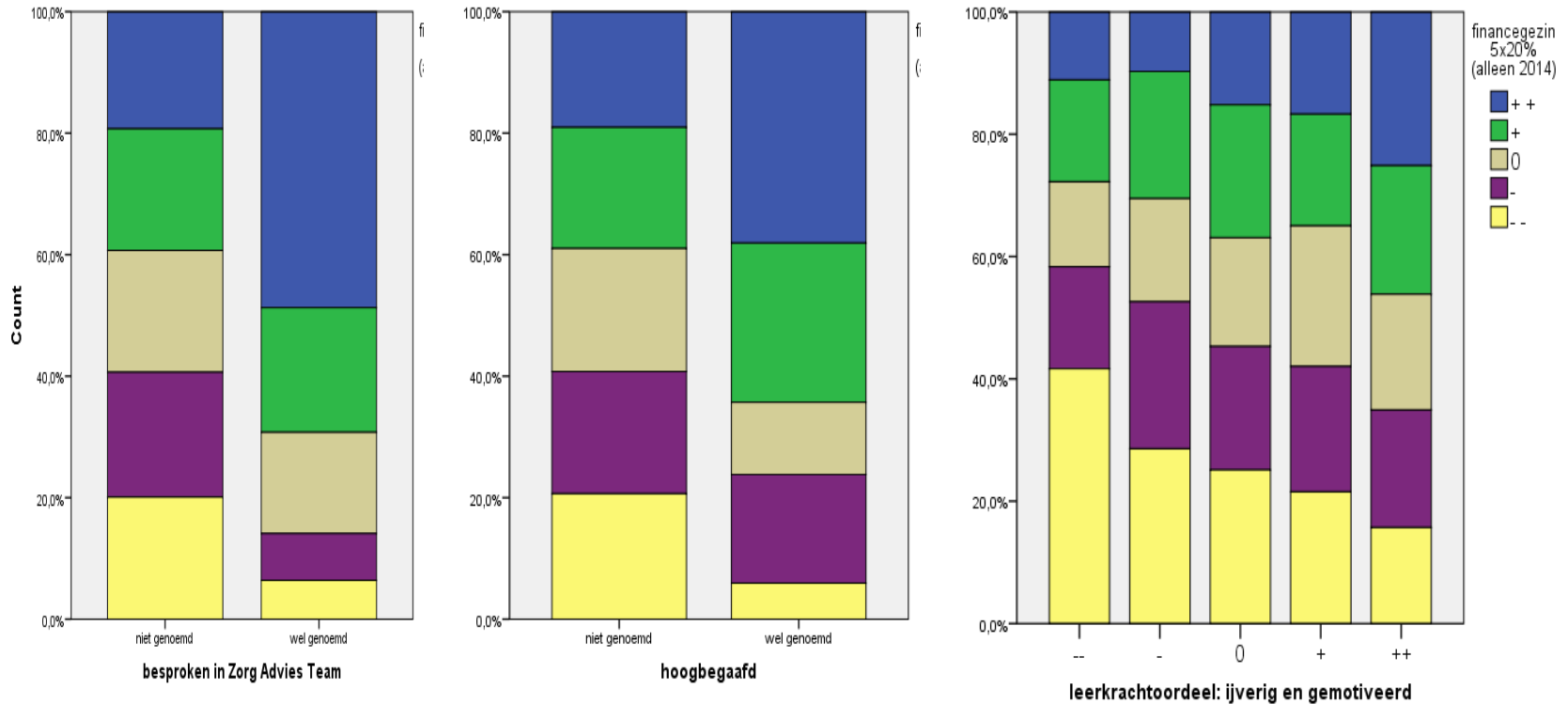


## Correlations with teacher perspective on pupil, IQ and CITO

rugzakleerling	-,052**	Sig. (2-tailed)	,009
bespr in Zorg Advies Team	-,136**	Sig. (2-tailed)	,000
individueel behandelplan	-,046*	Sig. (2-tailed)	,022
hoogbegaafd	,085**	Sig. (2-tailed)	,000
ijverig en gemotiveerd	,156**	Sig. (2-tailed)	,000
slim/kan abstract denken	,169**	Sig. (2-tailed)	,000
goed gemanierd/beschaafd	,140**	Sig. (2-tailed)	,000
ondersteunende thuisomg	,236**	Sig. (2-tailed)	,000
Total score on IQ test	,058**	Sig. (2-tailed)	,002
CITOscore	,203**	Sig. (2-tailed)	,000



## In graphs:



p.jungbluth@maastrichtuniversity.nl



## Regression CITO by SES, IQ, familybudget (only 2014)

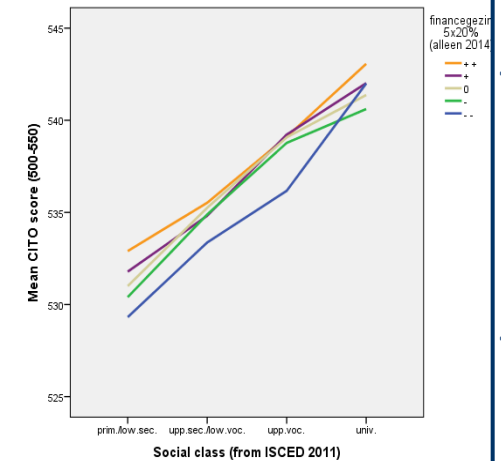
Model Summary

Model	R	R Square	Adjusted R Square	Std. Error of the Estimate	Change Statistics				
					R Square Change	F Change	df1	df2	Sig. F Change
1	,278 <sup>a</sup>	,077	,077	8,525	,077	246,286	1	2942	,000
2	,492 <sup>b</sup>	,243	,242	7,725	,165	641,745	1	2941	,000
3	,504 <sup>c</sup>	,254	,254	7,666	,012	46,739	1	2940	,000

a. Predictors: (Constant), Social class (from ISCED 2011)

b. Predictors: (Constant), Social class (from ISCED 2011), Total score on IQ test (0-43)(items 1-19 & 21-44)

c. Predictors: (Constant), Social class (from ISCED 2011), Total score on IQ test (0-43)(items 1-19 & 21-44), financegezin 5x20% (alleen 2014)



Coefficients<sup>a</sup>

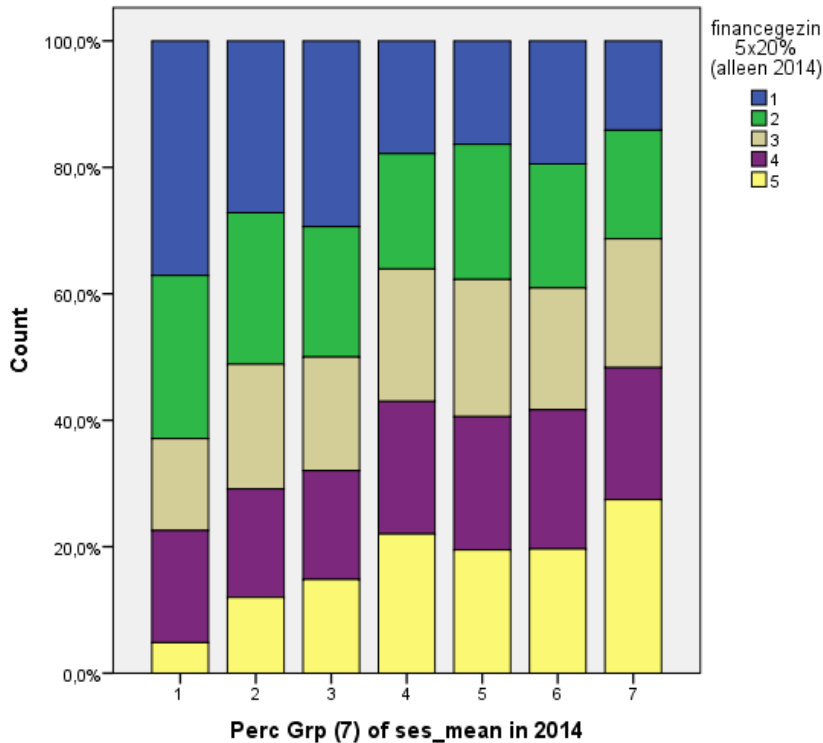
Model		Unstandardized Coefficients		Standardized Coefficients		t	Sig.	Correlations		
		B	Std. Error	Beta				Zero-order	Partial	Part
1	(Constant)	530,598	,415			1277,518	,000			
	Social class (from ISCED 2011)	2,115	,135	,278		15,694	,000	,278	,278	,278
2	(Constant)	507,426	,989			511,006	,000			
	Social class (from ISCED 2011)	1,575	,124	,207		12,701	,000	,278	,228	,204
	Total score on IQ test (0-43)(items 1-19 & 21-44)	,768	,030	,413		25,333	,000	,448	,423	,407
3	(Constant)	505,992	1,004			501,140	,000			
	Social class (from ISCED 2011)	1,319	,129	,173		10,263	,000	,278	,186	,163
	Total score on IQ test (0-43)(items 1-19 & 21-44)	,768	,030	,413		25,545	,000	,448	,426	,407
	financegezin 5x20% (alleen 2014)	,716	,105	,114		6,837	,000	,185	,125	,109

a. Dependent Variable: CITO score (500-550)

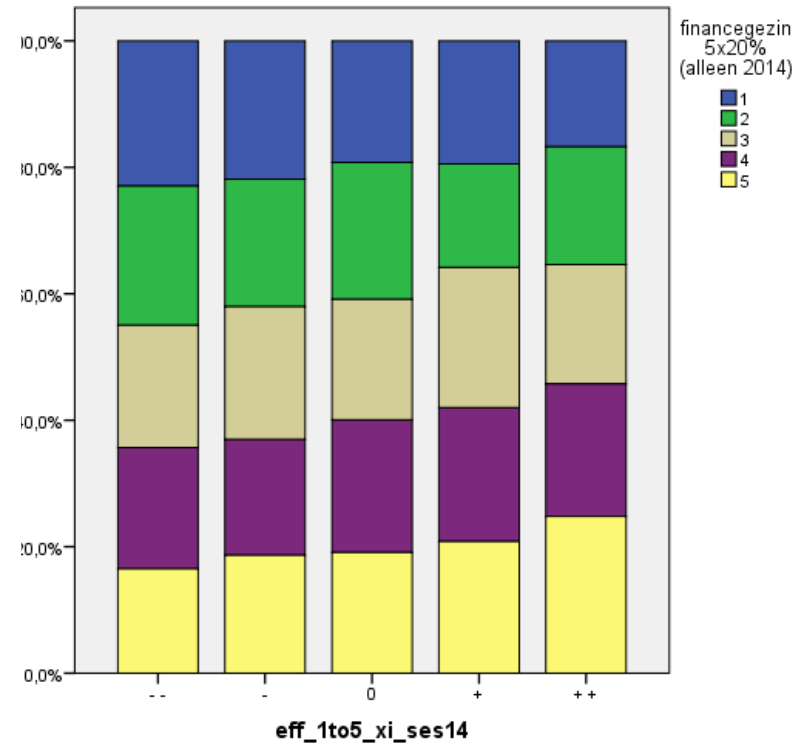
p.jungbluth@maastrichtuniversity.nl

# Segregation, family budget and school effectiveness I

At individual pupils' level:  
Family budget on segregated schools



At individual pupils' level:  
Family budget on schools with varying eff'ss

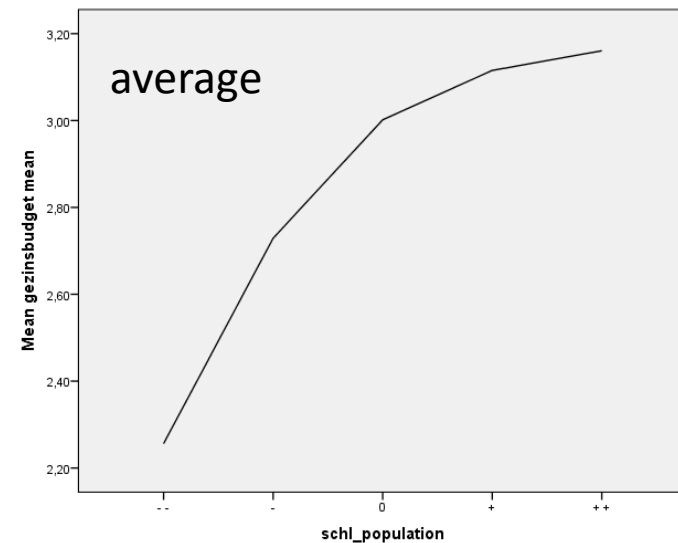
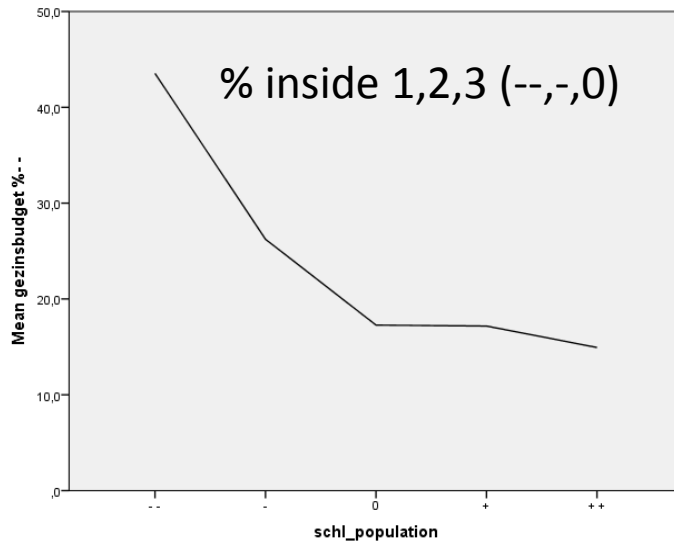






## Segregation, family budget and school effectiveness II

School level: link between family budget and schoolpopulation (= segregation)



School level: correlations

		Correlations				
		eff_1to5_xi_ses14	schl_populati on	gezinsbudget %- -	gezinsbudget %--/-	gezinsbudget mean
eff_1to5_xi_ses14	Pearson Correlation	1	,290**	-,164*	-,270**	,273**
	Sig. (2-tailed)		,000	,036	,000	,000
	N	166	166	164	164	164
schl_population	Pearson Correlation	,290**	1	-,466**	-,466**	,518**
	Sig. (2-tailed)	,000		,000	,000	,000
	N	166	226	179	179	179





## Segregation, family budget and school effectiveness II

School level regression:  
school effectiveness by segregation and by average family budget

Model Summary

Model	R	R Square	Adjusted R Square	Std. Error of the Estimate
1	,291 <sup>a</sup>	,084	,079	1,366
2	,321 <sup>b</sup>	,103	,092	1,356

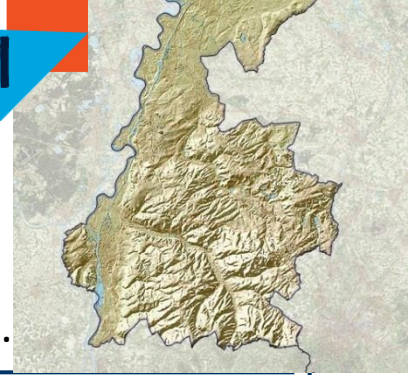
a. Predictors: (Constant), schl\_population

b. Predictors: (Constant), schl\_population, gezinsbudget mean

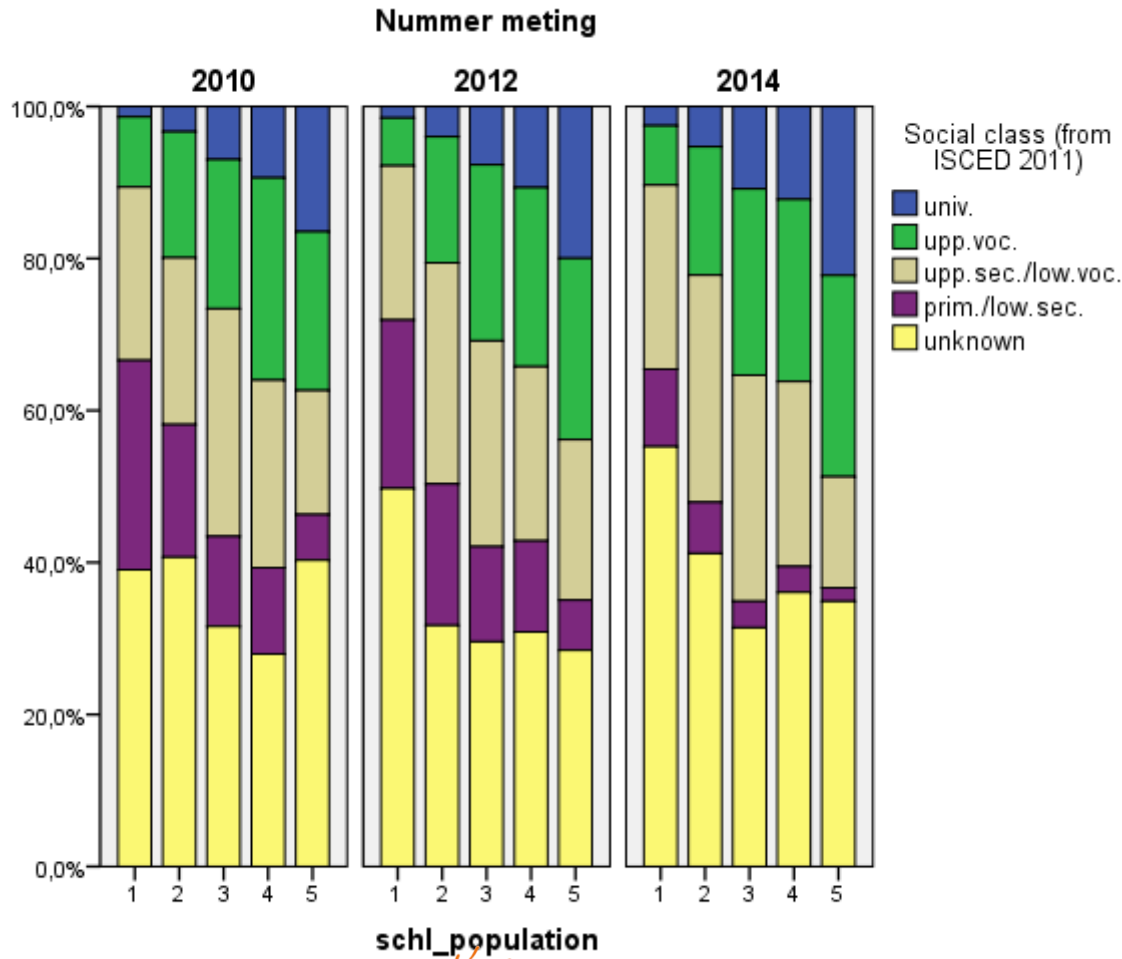
Coefficients<sup>a</sup>

Model		Unstandardized Coefficients		Standardized Coefficients	t	Sig.
		B	Std. Error	Beta		
1	(Constant)	2,054	,267		7,694	,000
	schl_population	,303	,078	,291	3,867	,000
2	(Constant)	1,119	,580		1,930	,055
	schl_population	,209	,093	,201	2,243	,026
	gezinsbudget mean	,423	,234	,162	1,812	,072

a. Dependent Variable: eff\_1to5\_xi\_ses14



**Proposition:** ask pupils about family budget to fill in missings on SES ...



... as practiced by Louise in drop-out survey, to be used in case of SES=missing (see graph for missings = unknown)



## Impact of segregation on CITO-scores (individual pupils' level)

Model Summary

Model	R	R Square	Adjusted R Square	Std. Error of the Estimate	Change Statistics				
					R Square Change	F Change	df1	df2	Sig. F Change
1	,278 <sup>a</sup>	,077	,077	8,524	,077	2149,184	1	25673	,000
2	,492 <sup>b</sup>	,243	,242	7,723	,165	5601,790	1	25672	,000
3	,497 <sup>c</sup>	,247	,247	7,700	,005	155,140	1	25671	,000

a. Predictors: (Constant), Social class (from ISCED 2011)

b. Predictors: (Constant), Social class (from ISCED 2011), Total score on IQ test (0-43)(items 1-19 & 21-44)

c. Predictors: (Constant), Social class (from ISCED 2011), Total score on IQ test (0-43)(items 1-19 & 21-44), schl\_population

Coefficients<sup>a</sup>

Model		Unstandardized Coefficients		Standardized Coefficients	t	Sig.	Correlations		
		B	Std. Error	Beta			Zero-order	Partial	Part
1	(Constant)	530,598	,141		3773,762	,000			
	Social class (from ISCED 2011)	2,115	,046	,278	46,359	,000	,278	,278	,278
2	(Constant)	507,426	,335		1515,667	,000			
	Social class (from ISCED 2011)	1,575	,042	,207	37,526	,000	,278	,228	,204
	Total score on IQ test (0-43)(items 1-19 & 21-44)	,768	,010	,413	71,845	,000	,448	,423	,407
3	(Constant)	506,608	,340		1489,226	,000			
	Social class (from ISCED 2011)	1,445	,043	,190	33,533	,000	,278	,205	,182
	Total score on IQ test (0-43)(items 1-19 & 21-44)	,758	,010	,408	73,968	,000	,448	,419	,401
	schl_population	,455	,037	,070	12,456	,000	,164	,078	,067

a. Dependent Variable: CITO score (500-550)

p.jungbluth@maastrichtuniversity.nl